



The Pearl[®]
at Fort Mill

A Phoenix Senior Living Community
Specializing in Memory Care

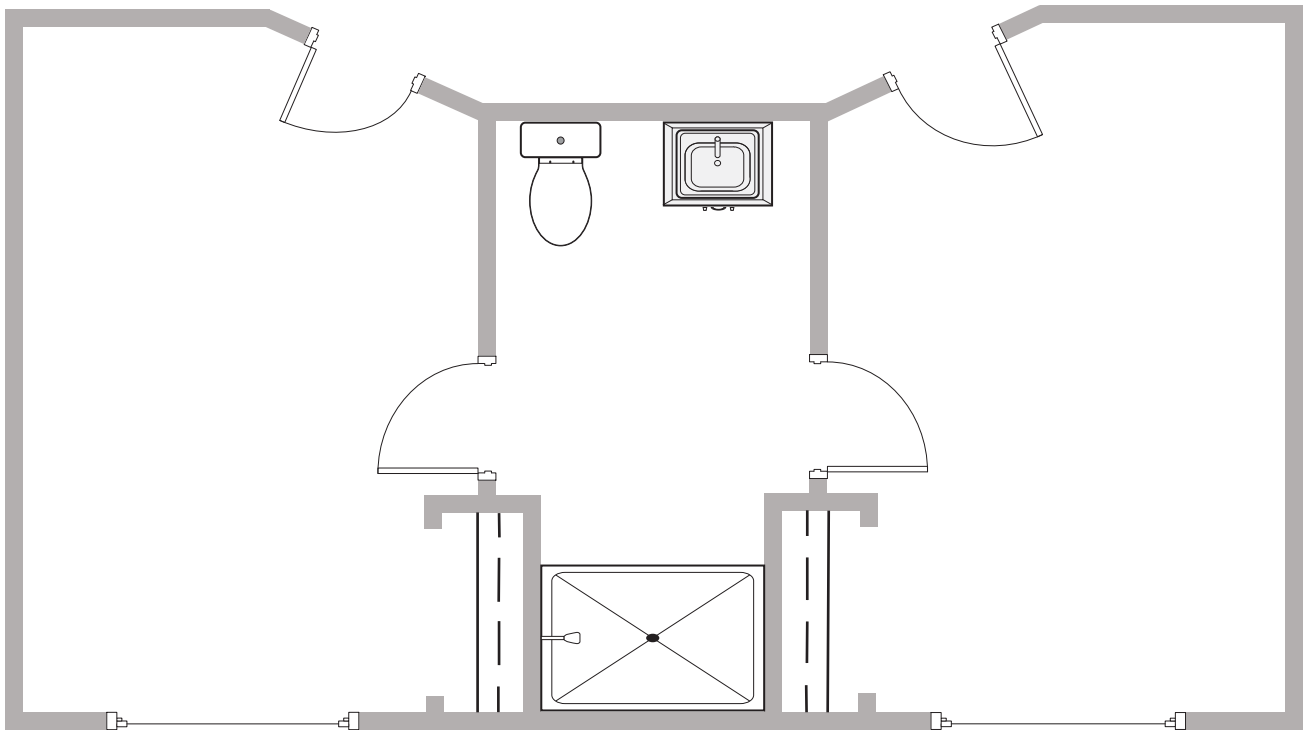
www.phoenixsrliving.com



SCAN ME

Floor Plan: Semi-Private Shared Bath

285 SQ. FT.*



**Floor plans shown are representative of a model apartment. Individual suites may vary in square footage, shape, and layout.*

1061 Gold Hill Road | Fort Mill, SC 29708 | 803-548-3825