



Summit Place
of Kings Mountain

A Phoenix Senior Living Community

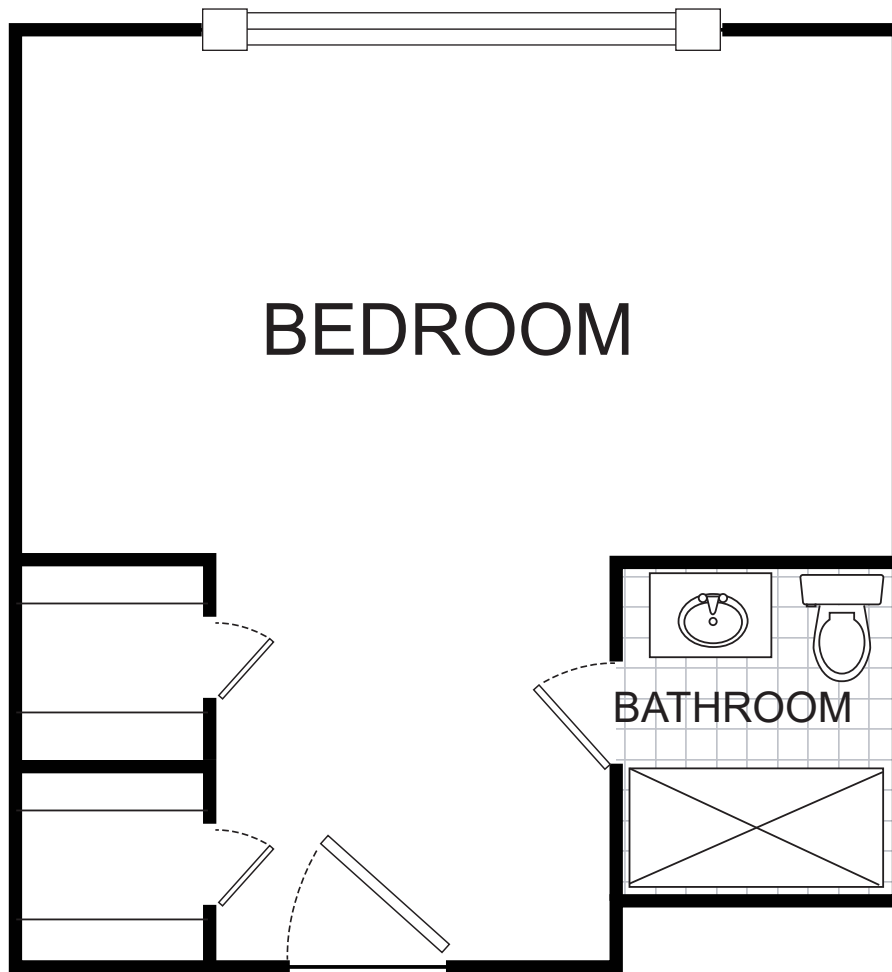
www.phoenixsrliving.com



SCAN ME

Floor Plan: Deluxe Private Suite

216 SQ. FT.*



**Floor plans shown are representative of a model apartment. Individual suites may vary in square footage, shape, and layout.*

1001 Phifer Road | Kings Mountain, NC 28086 | 704-739-6772